



THE INTERNATIONAL
YOUTH INITIATIVE PROGRAM

MARCH 15 - APRIL 14 2023

INTERNSHIP HOSTS YIP15

- Rosenhill, Sweden
- Open Source Arts, UK
- Elderberries 3Fold Cafe, USA
- Kufunda Village, Zimbabwe
- Movement Vilnius, Lithuania
- Associação Comunitária Monte Azul, Brazil
- Navdanya, India
- Holy Green Agro Farm, Nepal
- Waking Life, Portugal
- Sustainability Institute, South Africa
- Flordi, Belgium



To read more about experiences
from previous YIP years click below

- [Stories from YIP14](#)
- [Stories from YIP13](#)
- [Stories from YIP12](#)



INTERNSHIP YIP15 MARCH 15 - APRIL 14

ROSENHILL TRÄDGÅRD HB

Sustainable Agriculture, Food Processing, Sustainable Café



About Rosenhill Trädgård

Rosenhill Trädgård is a traditional family farm using organic methods to produce vegetables, apples and apple juice. The cafe, where you can get nice food, sandwiches, soup, ice cream and cookies, is a popular gathering place for people from Stockholm. The laid back relaxed atmosphere makes this a great place to relax and enjoy the Swedish countryside.

During the growing season (July/October) you can find a variety of fruits and vegetables and borrow scissors to pick a nice bouquet of flowers. Throughout summer Rosenhill hosts a wide variety of music gigs.

An important mission of Rosenhill Trädgård is to have a good time with the co-workers, volunteers and customers.



Info

WHERE?

Ekerö, Sweden

FOR WHO?

- Open minded people
- People willing to work hard

BUDGET PER WEEK

600SEK very approximately

MENTOR

Lars Sillén

WEBSITE

<https://www.rosenhill.nu/in dex.html>



Active Projects in March - April '23

- Preparing the garden, planting
- Renovation work
- Working in the cafe

Capacities / skills learned

Working with a variety of tasks;
experiencing a business from the garden to serving the food, community life and host-capacities.

Extra information

The YIP Internship is under the same circumstances as for other volunteers (mostly from WWOOF.se). It's good to read into this via: <https://www.rosenhill.nu/pages/english/WWOOFFAQ.pdf>





INTERNSHIP YIP15 MARCH 15 - APRIL 14

OPEN SOURCE ARTS

Climate action, creative arts, environmental activism

About Open Source Arts

Open Source Arts works with people and organisations to bring people together, get things un-stuck and move towards more sustainable futures, which we all believe are possible.

The centre has spaces for gathering, circus training facilities, a dance studio, wood working workshops, metalworking workshops, costume making, textiles, upholstery, for meeting and having events, and a cafe.



**OPEN
SOURCE
ARTS**

**A PLACE FOR
MAKING**

Info

WHERE?

Leeds, UK

FOR WHO?

For people who love arts, environmental action and working with young people!

CAPACITIES TO LEARN

- Creative campaigning
- Leadership
- Hosting and facilitation

MENTOR

Phil Marken

WEBSITE

<https://opensourcearts.co.uk/>



INTERNSHIP YIP15 MARCH 15 - APRIL 14

ELDERBERRIES 3FOLD CAFE

Threefolding Grassroots Organizing and Cultural Initiatives in the Community



Elderberries

About Elderberries 3Fold Cafe

Elderberries and Circles for a Renewal of Culture create curative spaces in urban communities, with art, music, peer to peer conversations and empowering young people to the Yes! We are also community activists who seek to be a part of the front line work in racism, poverty, mental health and adult education. Part of the whole is an invitation to transform the patterns we recognise together as unhealthy for oneself and community.

In Elderberries 3Fold Cafe interns will explore intentional community responsibility on a day to day practice. The Elderberries community is a place to jump in and tasks you to be ready to take initiative.



Info

WHERE?

Chicago, USA

FOR WHO?

Kind and hopeful individuals and those hoping to transform what they have learned from society up until now.

Interest to explore Anthroposophy in action.

Independent initiative takers who are ready to step in and to improvise.

BUDGET

TBC

MENTORS

Frank Aleph Agrama, Zuri Burns and Dottie Zold

WEBSITE

<http://wsif.org/portfolio/elderberries/>

Elderberries

Active Projects March - April '23

Bridging education, agriculture, medicine with those who share the same values - across borders of race, religion, nationality, and individual orientation. Opening Elderberries Cafe and collaborating with Thresholds, a live in high school for foster youth in Chicago.

Capacities / skills learned

Taking Initiative - Creating out of Nothing - Organizing a grassroots movement - Creating safety and healthy boundaries for oneself and for the community.

Requests & Expectations

We are a sober community, so no alcohol or drugs during the stay with us and this includes outside the house. - Open conversation as to what is working and what is not. Weekly Cleaning/Meeting Party. We invite that friends joining come with a clear intention to meet the community here with kindness, care and consideration for the whole.



INTERNSHIP YIP15 MARCH 15 - APRIL 14

KUFUNDA VILLAGE

Community Building, Waldorf School, Biodynamic farming



About Kufunda Village

Kufunda is an eco-village and a learning village that works with rural communities in Zimbabwe, supporting them in returning to a sense of wealth and wisdom in practical ways

Their learning of working with what they have has been expressed through eco-building, working with herbs and natural foods, biodynamic farming, and a Waldorf Inspired school.



Info

WHERE?

Zimbabwe

BUDGET PER WEEK

TBC

MENTOR

Maaianne Knuth

WEBSITE

<https://www.kufunda.org/>

An interview with
Maaianne Knuth - Founder
of Kufunda, made by YIP
alumni.

<https://www.youtube.com/watch?v=4DbAdSII47g&t=2s>



INTERNSHIP YIP15 MARCH 15 - APRIL 14

MOVEMENT VILNIUS

Physical movement/literacy to work with health, communication and expression as human beings

About Movement Vilnius

Movement Vilnius (MOVI) is a movement school born out of the need to rethink physical culture. They support and promote the idea of universal movement culture by providing the tools, methods and daily practices necessary for the realization of this idea.

This internship focuses on physical movement/literacy as a way to work with health, communication and expression as human beings.

The MOVI team is small and their way of working is based on non-linear power structures and integrates the concept of apprenticeship and closely working with others.

This internship requires self directed learning and capacity to independently organise oneself outside the activities that MOVI offers.



Info

WHERE?

Vilnius, Lithuania

CAPACITIES LEARNED

- Increase physical movement capacities
- Practice Workshop design and organization
- Facilitate and/or supporting the organizing of movement spaces
- Co-creation with a small team

BUDGET

TBC

MENTORS

Donata Buivyde & Justas Kučinskas

WEBSITE

<https://movi.lt/>

INTERNSHIP YIP15 MARCH 15 - APRIL 14

ASSOCIAÇÃO COMUNITÁRIA MONTE AZUL

Educational support in areas of social vulnerability



About Monte Azul

The Monte Azul Community Association is a non-governmental organization, guided by anthroposophical thinking, which acts primarily for the integral development of the Human Being. From this proposal, the work is based on Waldorf Pedagogy, Medicine and Social Pedagogy expanded by Anthroposophy and on the path of self-education.

The beginning in 1979 was constituted with the Núcleo Monte Azul, and later in 1983, with the expansion of the service to the Núcleo Peinha and also the Núcleo Horizonte Azul, all established in the periphery of the city of São Paulo, Brazil. Its programs bring together approximately 250 employees in the work developed at the Monte Azul, Peinha and Horizonte Azul centers, in addition to about 70 Brazilian and foreign volunteers. Services in the areas of education, culture and health are aimed directly at pregnant women and their babies, children, adolescents, young people, adults and people with disabilities, an average of 4,000 direct beneficiaries.



Info

WHERE?

Brasil
Centro Cultural Monte
Azul/ Favela Peinha /
Jardim Horizonte Azul

BUDGET PER MONTH

EUR 200 covering food and
housing

MENTOR

Vanusa Coutinho

WEBSITE

[https://www.monteazul.org.](https://www.monteazul.org/)
/



Activities that you could engage with...

- School shift programs
- Music school
- Waldorf School Program for young people with disabilities

Capacities and Skills learned...

Having some experience with children will greatly contribute to your work and development. To be cheerful, dynamic, creative and open to new experiences.

What kind of people would enjoy the work of your Organization?

Young people interested in education and social issues. Teachers and educators from other organizations linked to anthroposophy and waldorf pedagogy around the world.

Do you have any requests from the participants before the Internship begins?

It is very important to learn some Portuguese before your arrival. It will be a big change to come to work and live in a favela or a periphery neighbourhood for the first time. And the language will help you to better adapt to the new culture and atmosphere. People in the periphery normally don't speak any other language.





INTERNSHIP YIP15 MARCH 15 - APRIL 14

NAVDANYA

Education for sustainable living and earth citizenship

About Navdanya

Navdanya's learning centre is dedicated to education for sustainable living and earth citizenship which is located at Navdanya Biodiversity Conservation Farm in Doon Valley, Uttarakhand, nestled between the Ganga and the Yamuna, the Shivalik and Himalayan mountain ranges. Navdanya has created a biodiversity sanctuary for birds, butterflies, insects and soil microorganisms, through saving more than 1500 varieties of seeds and trees.

Here, nature in its diversity and dynamism is the highest teacher. We draw inspiration from India's ancient Aranya Sanskruti – of learning from nature and forests for how to live as Vasudhaiva Kutumbukam (The Earth Family).



Info

WHERE?

Navdanya biodynamic farm, Ramgarh, Shimbara, Dehradun 248197, Uttarakhand, India

FOR WHO?

People from all walks of life

BUDGET PER WEEK

TBC

MENTOR

Drona Chetri

WEBSITE

<https://www.navdanya.org/site/>



Active Projects March - April '23

We reach our full human potential when we use our heads, hearts and hands. The head is not the only source of learning, when we use our hands and hearts we learn at a deeper, more holistic level. At Navdanya we celebrate the work we do with our hands, we invite you to be part of this celebration.

As a Bijak, you can participate in our community through 3 aspects of community activity:

Bija (Seed) - you will be assigned for seed saving and biodiversity conservation activities of the community seed bank, in the growing, harvesting, and documenting of 750 varieties of rice, 222 varieties of wheat and other seed varieties by working on the fields, medicinal, kitchen and other gardens with the Navdanya Team, sowing, harvesting, weeding, planting, pruning, seed selecting, threshing and doing other seasonal & necessary activities.

Anna (Food) - the biodiversity of the Navdanya farm and farms of our members in different parts of the country is the basis of the diversity of the Navdanya organic kitchen. We have brought back healthy, nutritious crops we call 'forgotten foods' in our recipes. You learn how to cook with Indian spices that are also medicines in the Indian Ayurvedic tradition. As a Bijak you will be assigned to help in working the kitchen and dining hall, harvesting, cooking, cleaning and serving with the Navdanya Team.

Gyan (Knowledge), Navdanya is based on knowledge as living and free, a dialogue with the intelligence of Nature and people. Education at Bija Vidyapeeth (Earth University) includes self learning but also courses for education for Earth Democracy and education for earth citizenship. As a Bijak you will be assigned by Bijak coordinators in the back-end support for farmer training, courses and group visits, this would include maintaining the library, Logistics, audio-visual systems, etc.

"The only way
to build hope
is through the
earth."

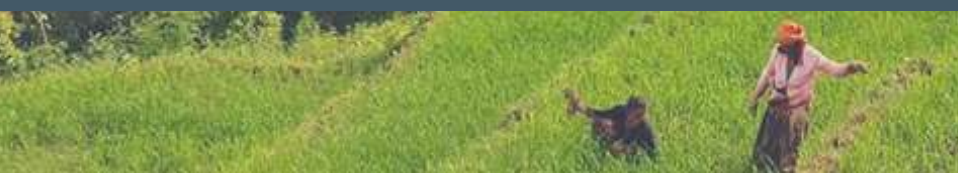
VANDANA SHIVA



INTERNSHIP YIP15 MARCH 15 - APRIL 14

HOLY GREEN AGRO FARM

Biodynamic farming, promoting social entrepreneurship in community model for sustainable rural development



About Holy Green Agro Farm

Holy Green Agro Farm started in 2014 as a biodynamic farm, which provides biodynamic produce to local communities in Nepal. It intends to expand as a processing center for organic products that will be made available locally and abroad; and an educational institution that can organize different courses, and training programs in Anthroposophy, Biodynamic Agriculture, and Waldorf Education.

Their aim is to establish and extend biodynamic farming and the seed bank, and to work with rural communities to improve socio economic conditions.



Info

WHERE?

Suklagandaki 3, Tanahun, Nepal

FOR WHO?

Passionate about organic farming, social entrepreneurship and community development. Individuals who love to work in field, engage with rural communities and help build local farming system.

BUDGET PER WEEK

140USD per week per person

MENTOR

Mahendra Kumar Shrestha

WEBSITE

<https://www.facebook.com/holygreenorganicfarm>



Active Projects March - April '23

1. Work in the farm
2. Interact and attend class at CTEVT, Council for Technical Education and Vocational Training
3. Community visit program at Rishing
4. Interaction with elected Municipality leaders and discuss about policy on agriculture
5. Learn about local foods

Capacities/Skills Learned

1. Understand organic biodynamic agriculture.
2. Learn how a poor community can be empowered.
3. Understand overall ecosystem of community model agriculture in Nepal.

Request from Host

Come with a positive and open mind. Ready to accommodate in a rural setting with a very limited material luxury. Excitement and with with local communities fitting in with their local culture.





INTERNSHIP YIP15 MARCH 15 - APRIL 14

WAKING LIFE

Regenerative Agriculture, Resilient ways of living,
Ecology in the context of a festival, Creativity

About Waking Life

Waking Life is a non-profit organization that has been organizing an annual cultural event in a rural area of Portugal since 2017: in Crato, Alentejo. It is designed and co-created by a team of 400 international volunteers and welcomed up to 7000 participants. Our organizational model promotes inclusion, sustainability, skill sharing, intercultural exchange and youth empowerment. The complexity of today's global challenges requires inclusive and global alternatives, and in this sense, the co-creative approach of our activities is committed to empowering individuals and collectives to contribute to sustainable citizenship and shape more inclusive and sustainable societies. In 2020, Waking Life became a year-round project, with part of the team living on site to develop it beyond the festival. It now includes a permaculture farm, a regeneration plan that aims to regenerate over 30 hectares of land and move towards circularity, as well as art and science residencies that consider alternative perspectives on our relationship with the natural world. The team has begun to undertake conservation work on the site, intending to protect a diverse range of biodiversity and to ensure safe access for visitors to enjoy the green spaces and the wildlife they host. The collaborative project is rooted in the local community and aims to bring environmental and social regeneration to the area and beyond, through the enhancement of artistic and permaculture practices. Themes such as social inclusion, sustainability and community building are integral to our work, from the content to the design of the activities themselves.

Info

WHERE?

Crato, Portugal

FOR WHO?

People with a high dose of curiosity, willing to imagine and create resilient ways of living, work together with the land and develop projects in creative contexts.

BUDGET PER WEEK

175 euros per person

MENTOR

Emma Duc Goninaz

WEBSITE

<https://wakinglife.pt/>



Active Projects March - April '23

Land projects: take part of the regenerative and edible landscape implementation, this includes different activities such as seeding, planting, making compost, installing irrigation, pruning... At the moment, we are planning to work on the kitchen garden, medicinal plant garden and the Mediterranean orchard, this may change regarding the group and the seasonal planning.

Social project: Developing activities to exchange with the local community on ecological and social topics.

Creativity project: Developing creative concepts around the topic of ecology, bridging the permanent project to the festival (which happens in August).

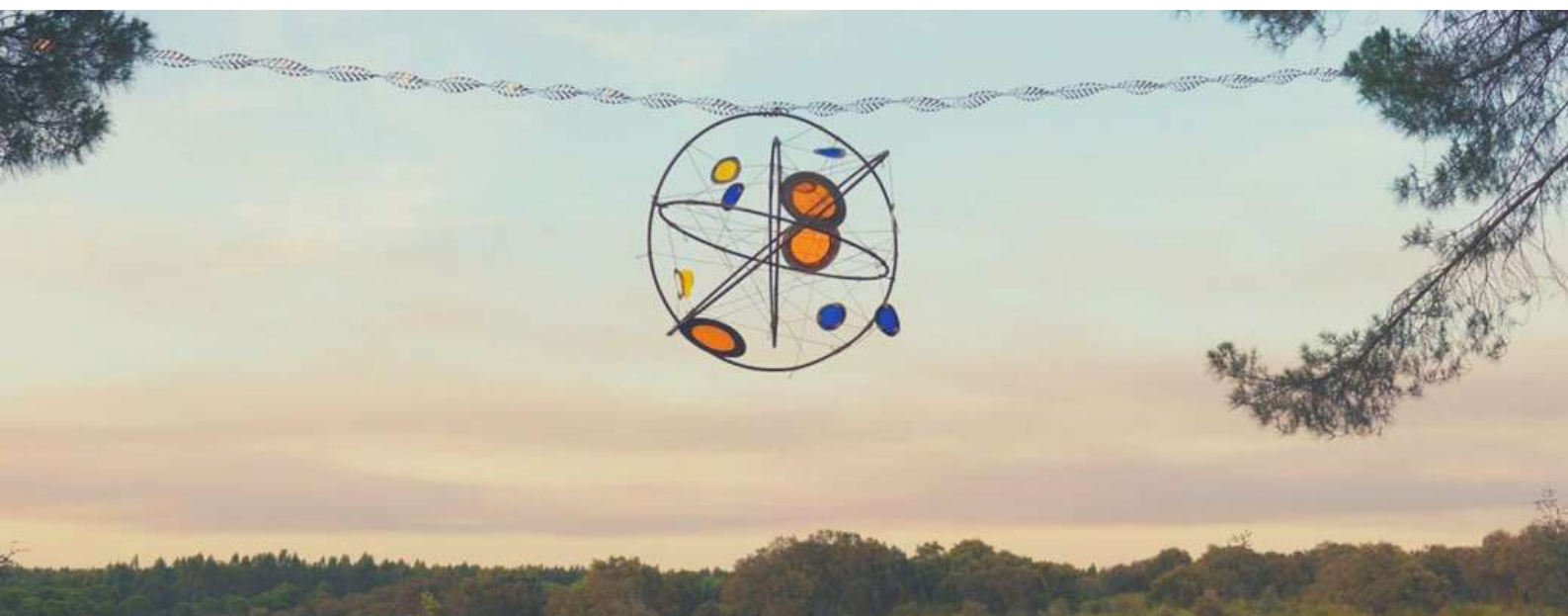
Kitchen: creative cooking with garden produce, bread baking, fermentation and conserve.

Artisanal handicraft: making soap with local herbs and flowers. Additionally, you can also participate in our yoga and meditation sessions.

Please note that we kept it really broad as we would like to build the program together with the group. Regarding your interests and common interest, we may organize different workshops on diverse domains such as stone building, carpentry, seed keeping, fermentation...

Capacities/Skills Learned

Permaculture, kitchen garden, agroforestry, mediterranean orchard, compost making, cooking/fermentation, supporting the organisation of a festival and many other creative processes.





INTERNSHIP YIP15 MARCH 15 - APRIL 14

SUSTAINABILITY INSTITUTE

Transformative Learning for Sustainability

About Sustainability Institute

At the Sustainability Institute, we engage in transformative learning towards just and generative futures.

The Sustainability Institute's main thematic concern is 'sustainable development'. The Sustainability Institute works in collaboration with its community to have a transformative impact on the lives of the people in the Lynedoch Valley. An example of which is evident through the various educational programmes offered to the children and youth of this community.

The Sustainability Institute also hosts a multitude of different research & learning programmes, all based in sustainable development. Which have resulted in its recognition as a leading expert institution in navigating the transition towards social justice, and change in the complex futures of Africa.



Info

WHERE?

Lynedoch Valley,
Stellenbosch, South Africa

FOR WHO?

Hands on, community
oriented, open-minded,
warm spirited

BUDGET PER WEEK

Local accommodation can
be organised at around
R250/night, food suggested
budget at R100/day (lean
budget though - based on
cooking at home etc) and
transport budget for the
week perhaps around R500
each

MENTOR

Jess Schulschenk

WEBSITE

<https://www.sustainabilityinstitute.net/>



Active Projects March - April '23

Early learning preschool; Primary school; High school after school programmes; Creative arts barn; movement and mindfulness; permaculture and nutrition; Living Soils community farm; Energy, water, waste and biodiversity programmes onsite

Capacities / skills learned

Learning for sustainability in practice from early to lifelong learning, operating a campus, leading with head, heart and soul, sustainability practice in practice, running an organisation, communicating internally and externally



SUSTAINABILITY
INSTITUTE



INTERNSHIP YIP15 MARCH 15 - APRIL 14

FLORDI CAFE

Cooperative music cafe and Societal Entrepreneurship

About Café Flordi

After years of activist engagements in society, a group of friends decided to become societal entrepreneurs by opening a cooperative music cafe in the center of Ghent, called Café Flordi. The mission of this project is to create a space that counteracts hyper-capitalism, discrimination and war, inequality and poverty, environmental pollution and climate change. Some of the ways in which Café Flordi brings this into practice is through using second hand building materials and through their alternative economy.

Activities are work in the cafe and organic shop, organisation of concerts and events, help create alternative Grunling currency.

Interns will learn about societal entrepreneurship in all its forms: how to make money and a positive impact at the same time and practice taking initiative and contributing to new and existing projects in and around the cafe.



Info

WHERE?

Ghent, Belgium

FOR WHO?

Hands on, independent, flexible, community oriented, with interest in music / arts / alternative economics.

BUDGET PER WEEK

200,- EUR

MENTOR

Tom Michels

WEBSITE

<https://www.flordi.be/>